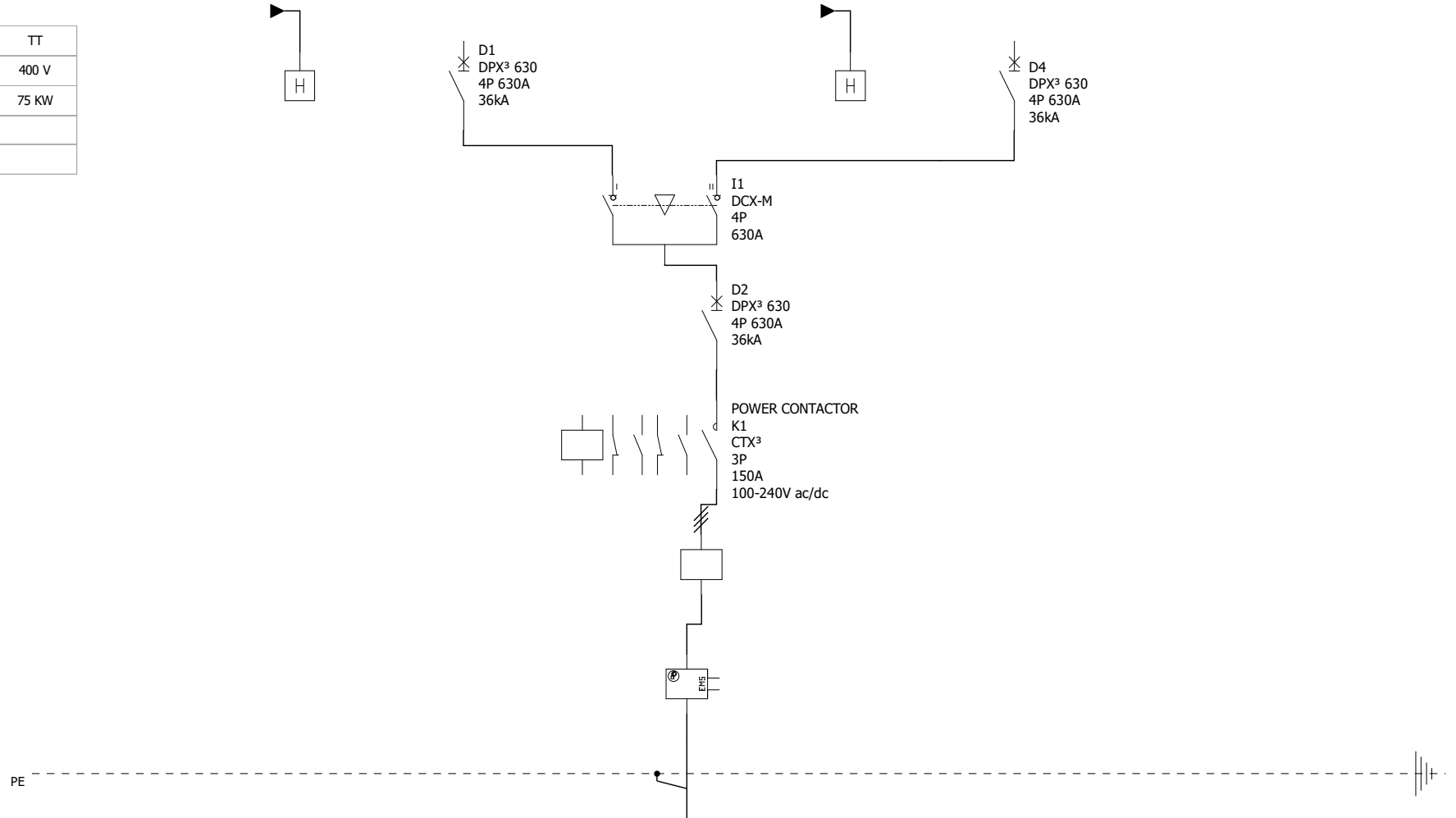


Neutral Earthing System	TT
Nominal voltage	400 V
Installed power	75 KW
IK1 Max	
IK3 Max	



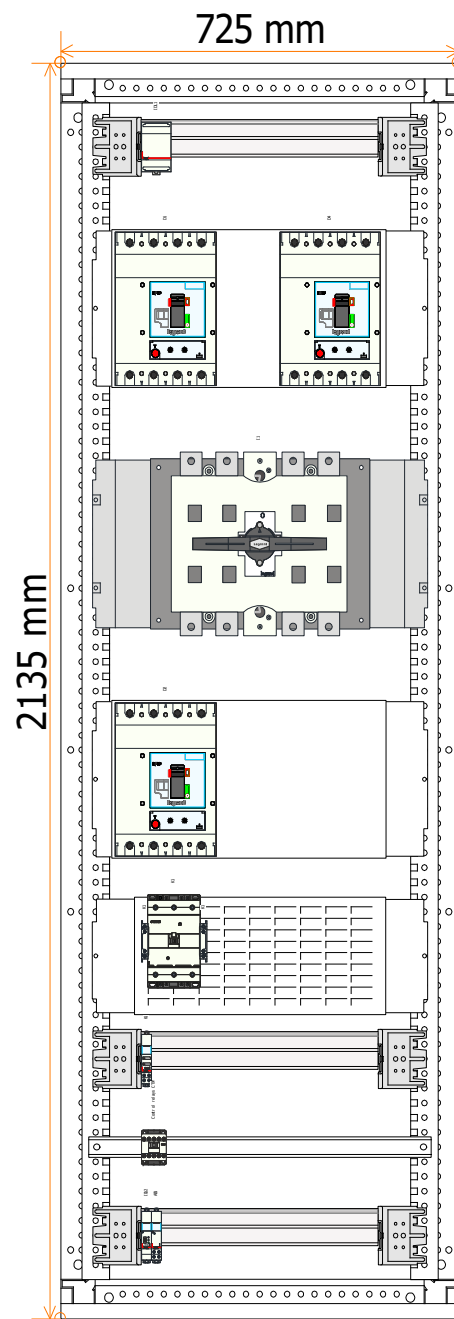
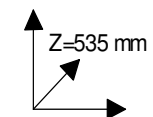
Device Identification		CP1	D1	D2	CP1	D4		
Description			POWER FROM GENERATOR	FIRE PUMP DB		POWER FROM CITY		
Power			75 KW	75 KW		75 KW		
Cable length			15 M	-		30 M		
Cable sections			5*50	5*50		5*50		
Cable type			N2XH	N2XH		N2XH		
Type cable insulation			XLPE	XLPE		XLPE		



## ALTA STORAGES

### ATS FIRE PUMP DB

N° of project:		C		F	
N° plan:		B		E	
		A		D	
Date:	6/10/2026	Drawn by:	VAKHTANG TURASHVILI	N° folio:	1 / 3



**ALTA STORAGES**  
**ATS FIRE PUMP DB**

N° of project:

N° plan:

Date:

6/10/2026

Drawn by:

VAKHTANG  
TURASHVILI

C

B

A

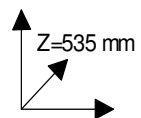
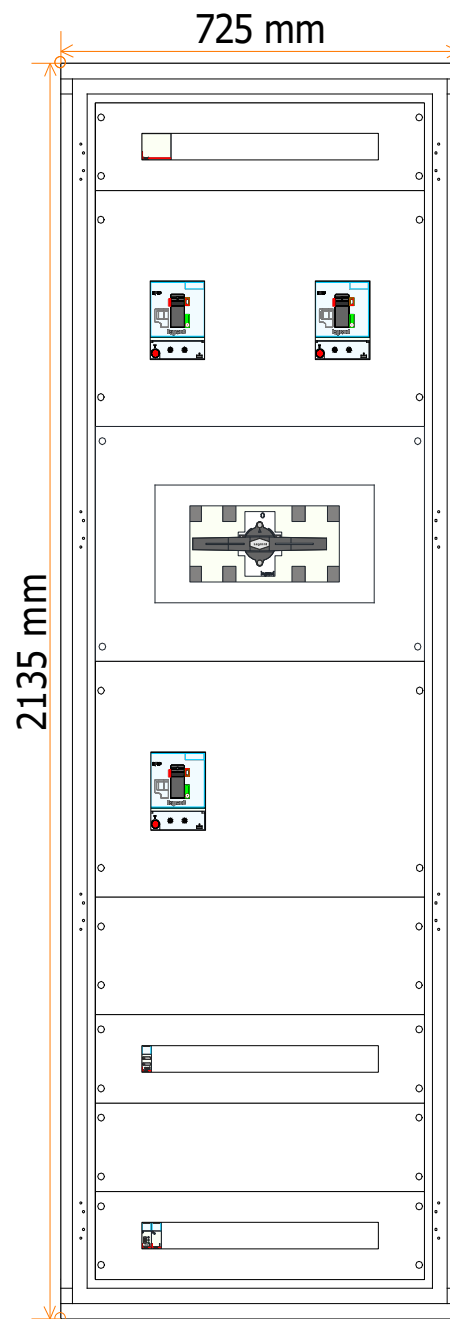
F

E

D

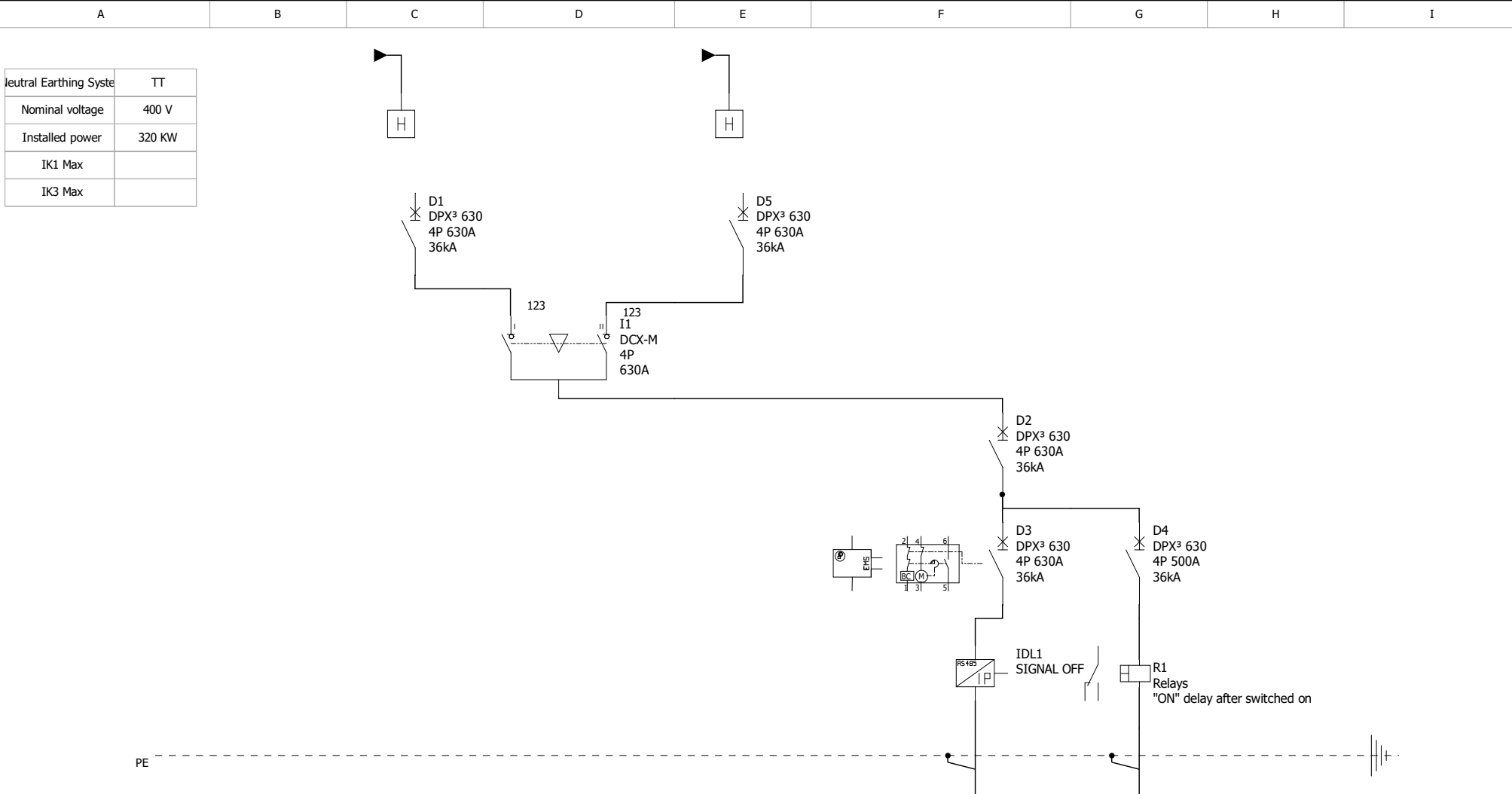
N° folio:

2 / 3



**ALTA STORAGES**  
**ATS FIRE PUMP DB**

N° of project:			C		F	
			B		E	
			A		D	
Date:	6/10/2026	Drawn by:	VAKHTANG TURASHVILI		N° folio:	3 / 3



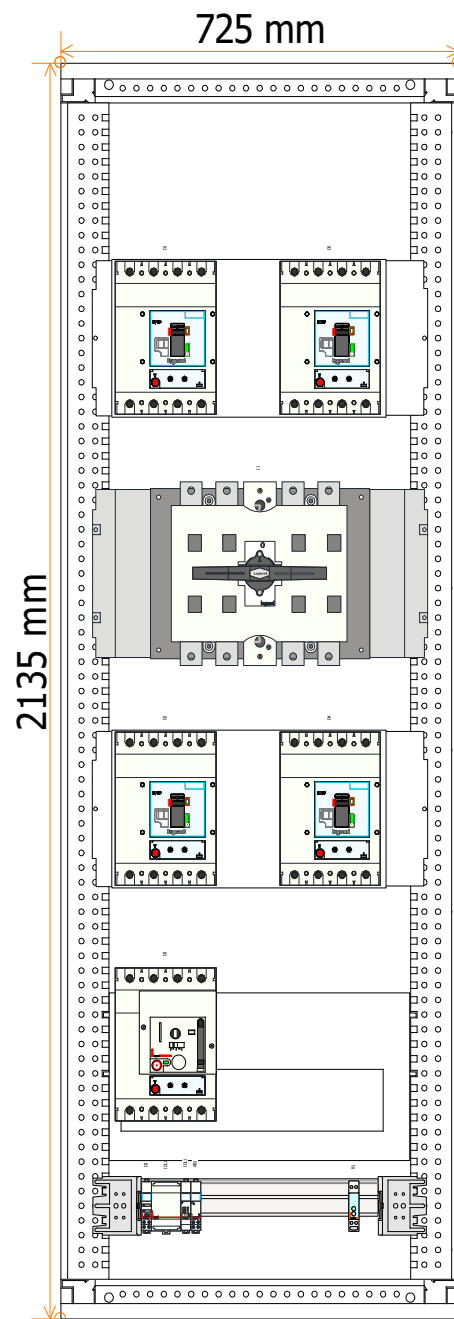
Device Identification		D1	I1	D5	D3	D4	
Description		POWER FROM GENERATOR	ATS NORMAL AND FLSD	POWER FROM CITY	NORMAL POWER	FLSD POWER	
Power		320 KW	320 KW	320 KW	320 KW	240 KW	
Cable length		30 M	-	3 M	3 M	3 M	
Cable sections		2*4*150	2*4*150	2*4*150	2*4*150	4*240	
Cable type		N2XH	N2XH	N2XH	N2XH	N2XH	
Type cable insulation		XLPE	XLPE	XLPE	XLPE	XLPE	



**ALTA STORAGES**

**ATS BOARD BIG**

N° of project:		C		F	
N° plan:		B		E	
		A		D	
Date:	6/10/2026	Drawn by:	VAKHTANG TURASHVILI	N° folio:	1 / 3



**ALTA STORAGES**

**ATS BOARD BIG**

N° of project:

N° plan:

Date:

6/10/2026

Drawn by:

VAKHTANG  
TURASHVILI

C

B

A

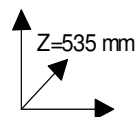
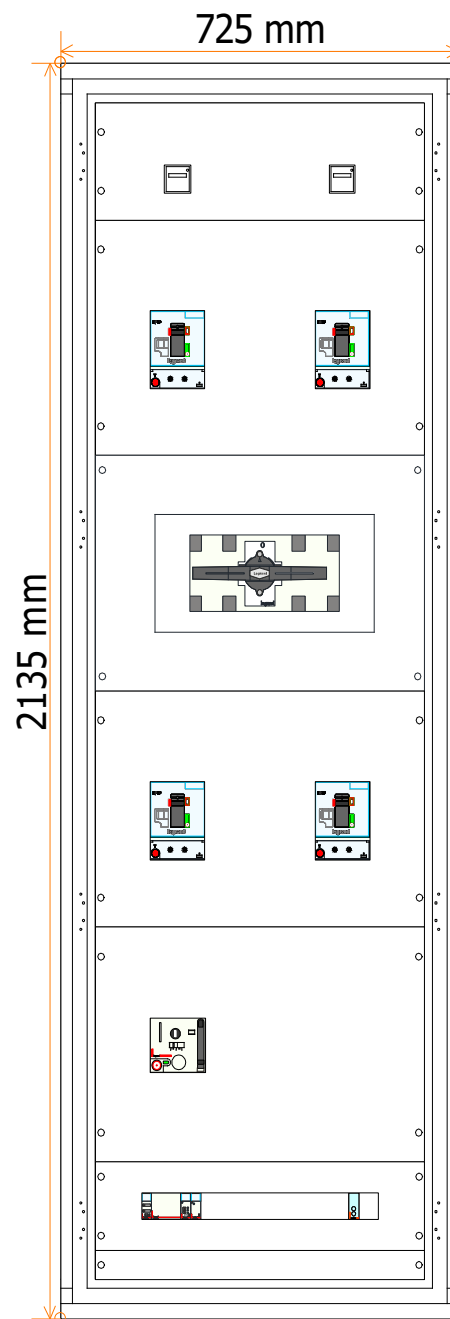
F

E

D

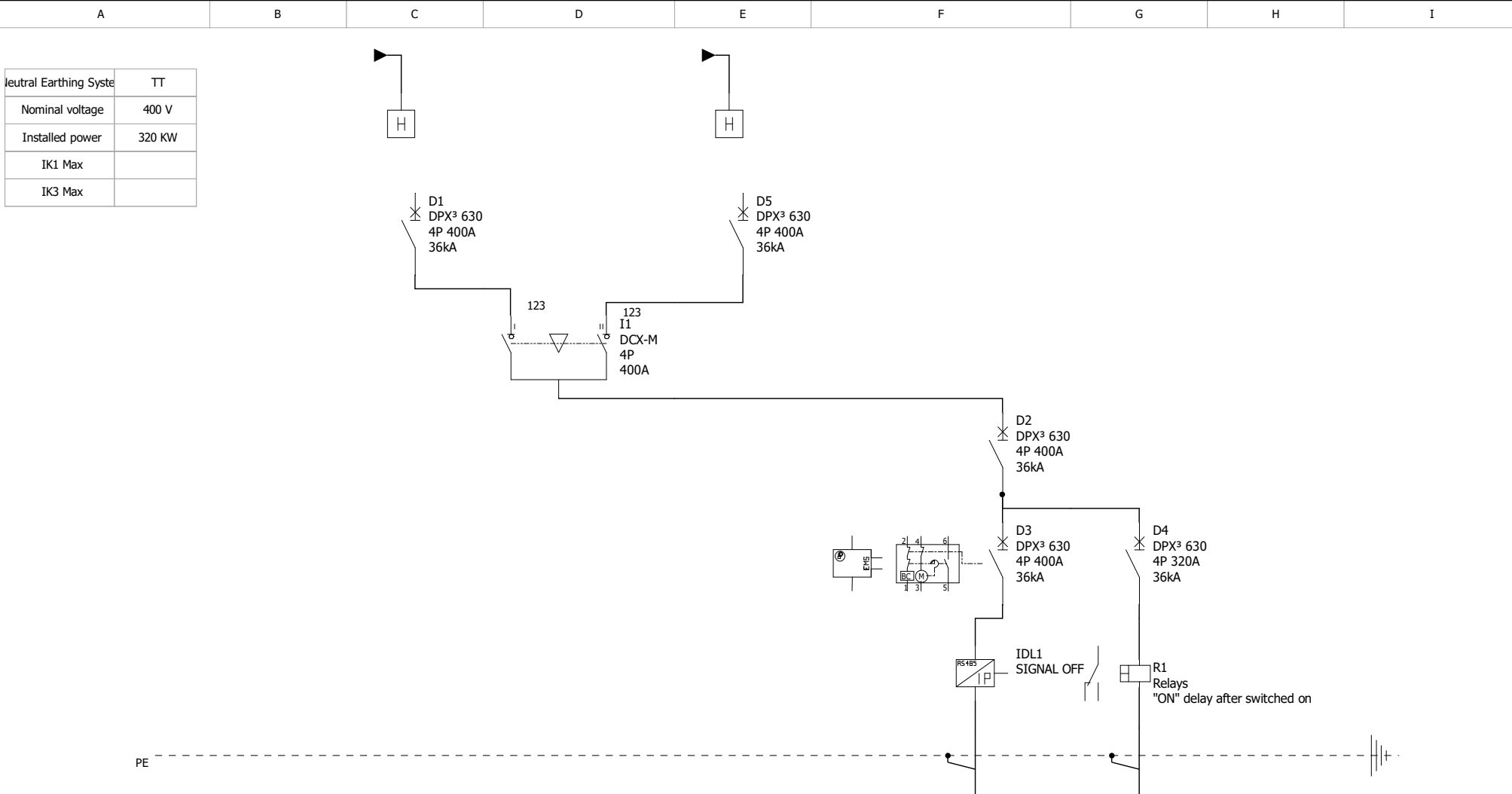
N° folio:

2 / 3



**ALTA STORAGES**  
**ATS BOARD BIG**

N° of project:			C		F	
			B		E	
			A		D	
Date:	6/10/2026	Drawn by:	VAKHTANG TURASHVILI		N° folio:	3 / 3



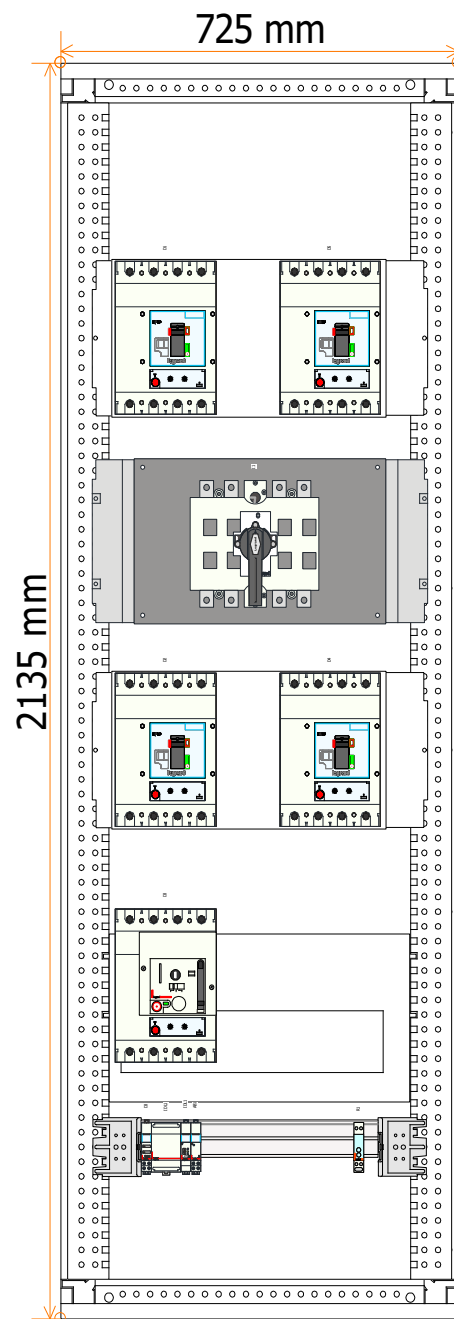
Device Identification		D1	I1	D5	D3	D4	
Description		POWER FROM GENERATOR	ATS NORMAL AND FLSDDB	POWER FROM CITY	NORMAL POWER	FLSDDB POWER	
Power		200 KW	200 KW	200 KW	200 KW	134 KW	
Cable length		35 M	-	3 M	3 M	3 M	
Cable sections		4*185	4*185	4*185	4*185	4*120	
Cable type		N2XH	N2XH	N2XH	N2XH	N2XH	
Type cable insulation		XLPE	XLPE	XLPE	XLPE	XLPE	



ALTA STORAGES

ATS BOARD SMALL

N° of project:		C		F	
N° plan:		B		E	
Date:	6/10/2026	Drawn by:	VAKHTANG TURASHVILI	N° folio:	1 / 3



**ALTA STORAGE**

**ATS BOARD SMALL**

N° of project:

N° plan:

Date:

6/10/2026

Drawn by:

VAKHTANG  
TURASHVILI

C

B

A

F

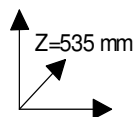
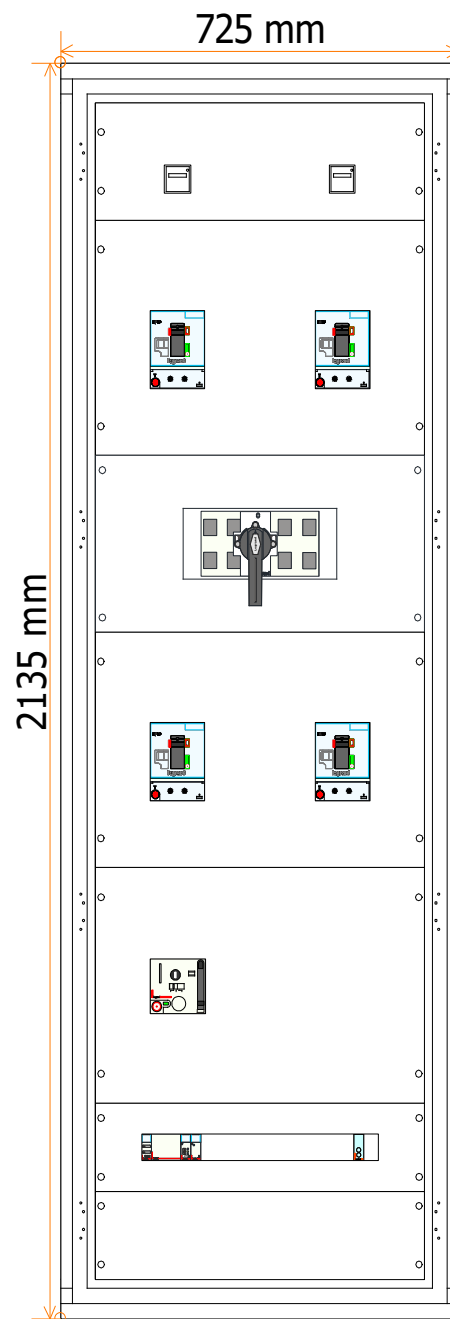
E

D

N° folio:

2 / 3





**ALTA STORAGES**  
**ATS BOARD SMALL**

N° of project:

N° plan:

Date:

6/10/2026

Drawn by:

VAKHTANG  
TURASHVILI

C

B

A

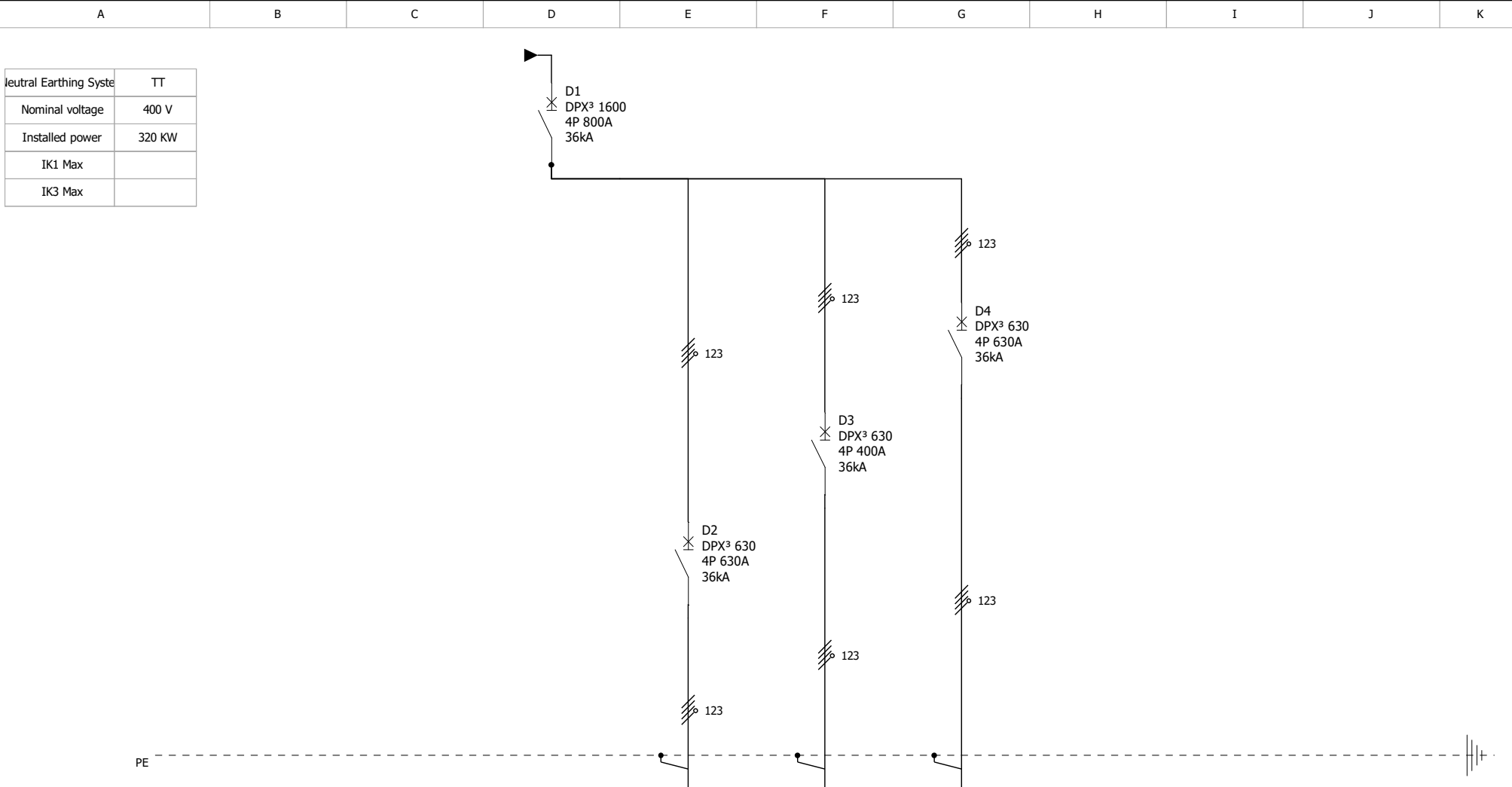
F

E

D

N° folio:

3 / 3



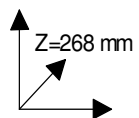
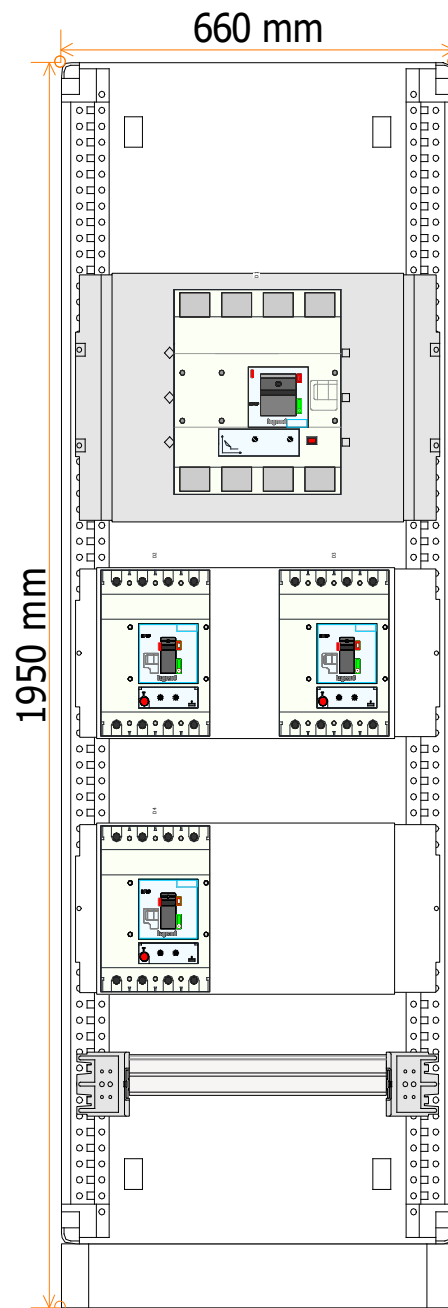
Device Identification			D1	D2	D3	D4			
Description			MAIN RECEIVING CB	BIG STORAGE LINE	SMALL STORAGE LINE	FIRE PUMP LINE			
Power			320 KW	320 KW	200 KW	75 KW			
Cable length			2 M	30 M	35 M	15 M			
Cable sections			2*4*185	2*4*150	4*185	4*50			
Cable type			N2XH	N2XH	N2XH	N2XH FE180/E90			
Type cable insulation			XLPE	XLPE	XLPE	XLPE			
Voltage Drop %			0.03%	0.4%	0.4%	0.4%			



ALTA STORAGES

GENERATOR BOARD

N° of project:		C		F	
N° plan:		B		E	
		A		D	
Date:	6/10/2026	Drawn by:	VAKHTANG TUBASHVILI	N° folio:	1 / 3



**ALTA STORAGES**  
**GENERATOR BOARD**

N° of project:

N° plan:

Date:

6/10/2026

Drawn by:

VAKHTANG  
TURASHVILI

C

B

A

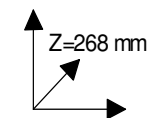
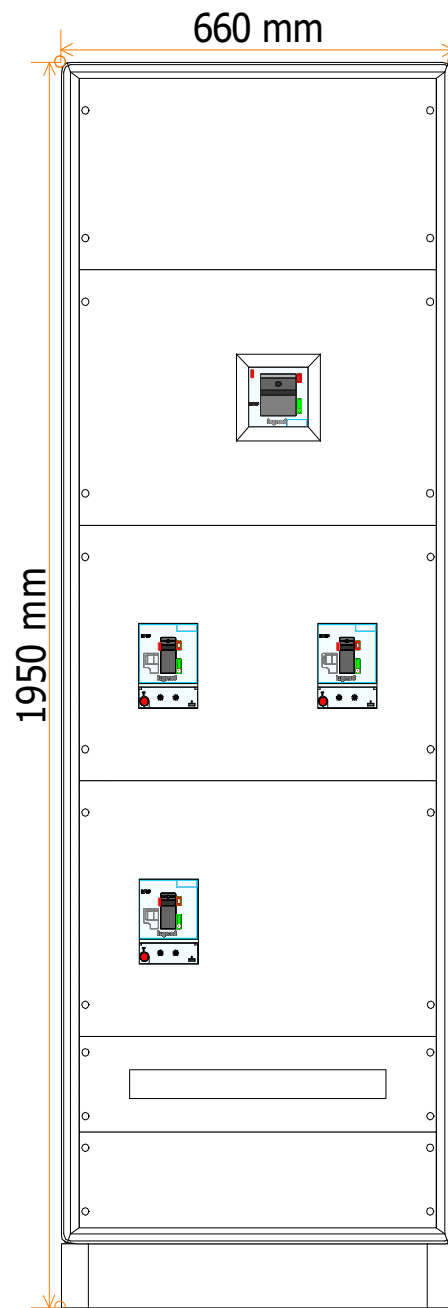
F

E

D

N° folio:

2 / 3



# **ALTA STORAGES** **GENERATOR BOARD**

N° of project:

N° plan:

Date:

6/10/2026

Drawn by:

VAKHTANG  
TURASHVILI

C

B

A

F

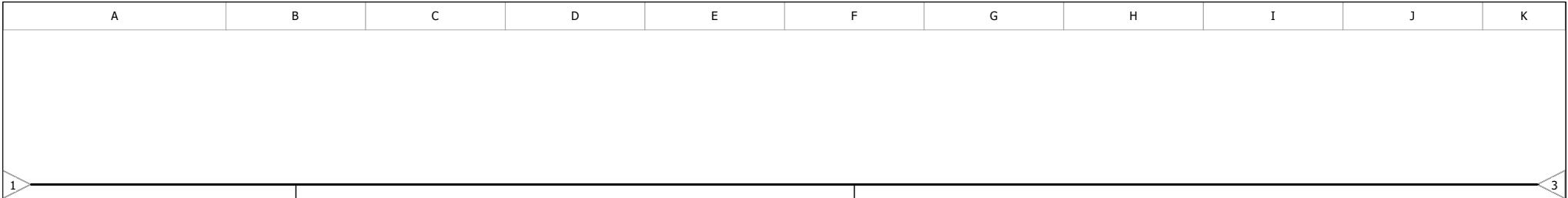
E

D

N° folio:

3 / 3





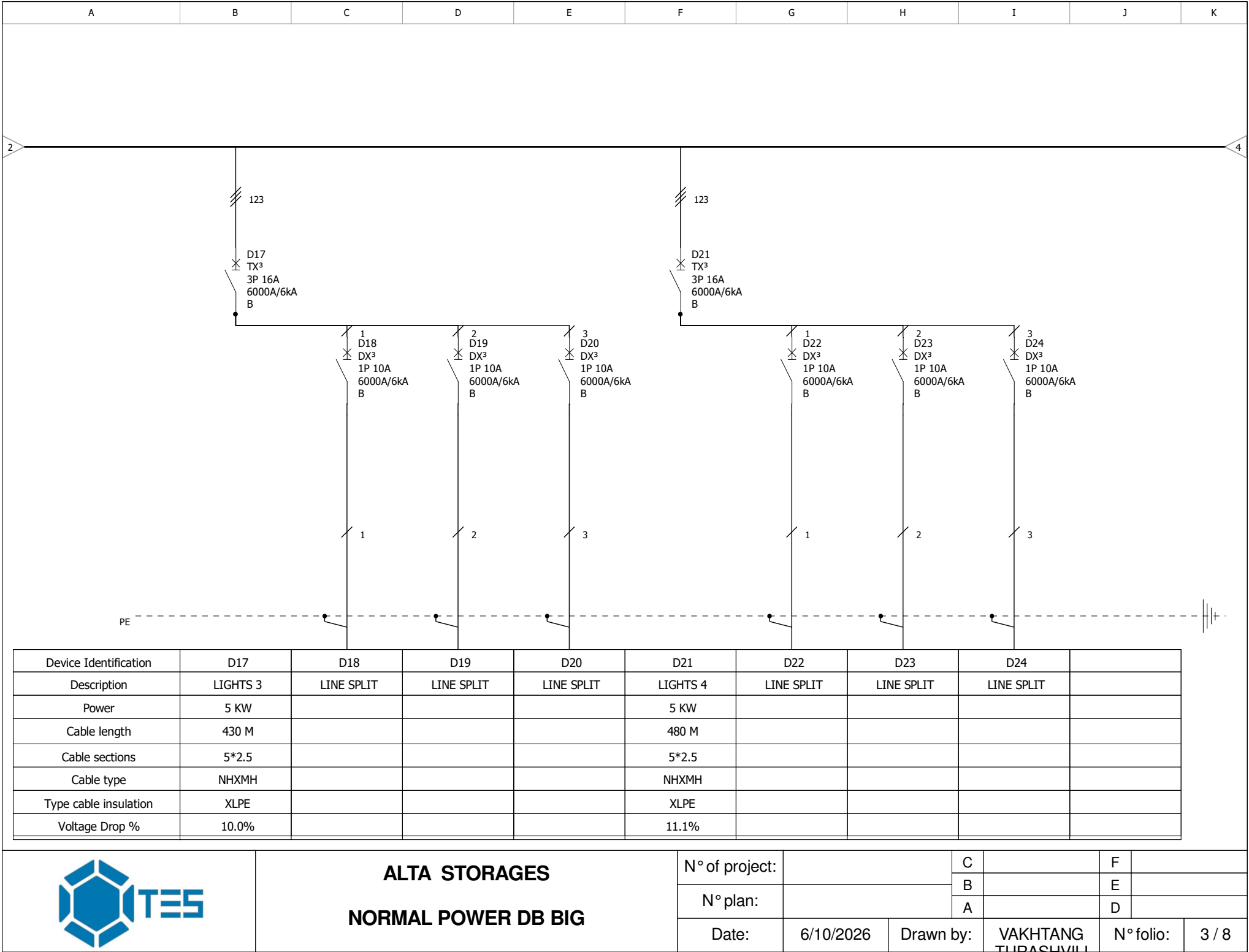
Device Identification	D9	D10	D11	D12	D13	D14	D15	D16	
Description	LIGHTS 1	LINE SPLIT	LINE SPLIT	LINE SPLIT	LIGHTS 2	LINE SPLIT	LINE SPLIT	LINE SPLIT	
Power	5 KW				5 KW				
Cable length	350 M				370 M				
Cable sections	5*2.5				5*2.5				
Cable type	NHXMH				NHXMH				
Type cable insulation	XLPE				XLPE				
Voltage Drop %	8.1%				8.6%				

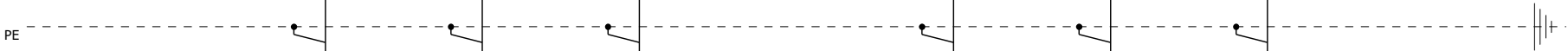


ALTA STORAGES

NORMAL POWER DB BIG

N° of project:		C		F	
N° plan:		B		E	
		A		D	
Date:	6/10/2026	Drawn by:	VAKHTANG TURASHVILI	N° folio:	2 / 8





Device Identification	D25	D26	D27	D28	D29	D30	D31	D32	
Description	LIGHTS 5	LINE SPLIT	LINE SPLIT	LINE SPLIT	LIGHTS 6	LINE SPLIT	LINE SPLIT	LINE SPLIT	
Power	5 KW				5 KW				
Cable length	540 M				540 M				
Cable sections	5*2.5				5*2.5				
Cable type	NHXMH				NHXMH				
Type cable insulation	XLPE				XLPE				
Voltage Drop %	12.5%				12.5%				

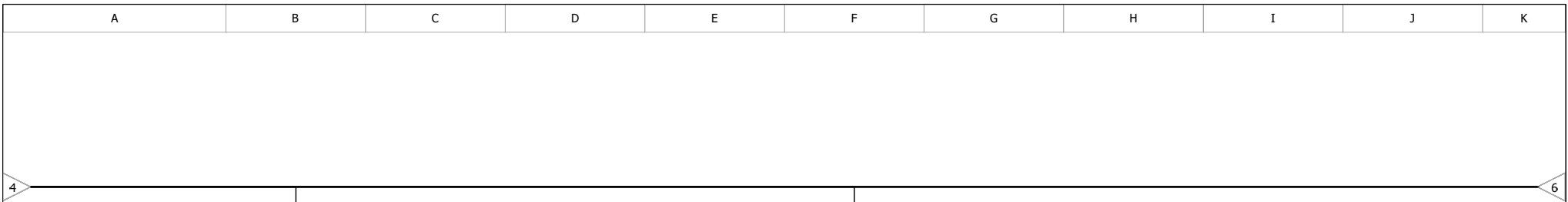


ALTA STORAGES

NORMAL POWER DB BIG

N° of project:		C		F	
N° plan:		B		E	
		A		D	
Date:	6/10/2026	Drawn by:	VAKHTANG TURASHVILI	N° folio:	4 / 8





Device Identification	D33	D34	D35	D36	D37	D38	D39	D40	
Description	EM LIGHTS 1	LINE SPLIT	LINE SPLIT	LINE SPLIT	EM LIGHTS 2	LINE SPLIT	LINE SPLIT	LINE SPLIT	
Power	0.3 KW				0.3 KW				
Cable length	1100 M				1200 M				
Cable sections	5*2.5				5*2.5				
Cable type	NHXMH				NHXMH				
Type cable insulation	XLPE				XLPE				
Voltage Drop %	3.1%				3.4%				

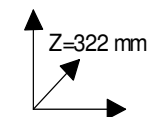
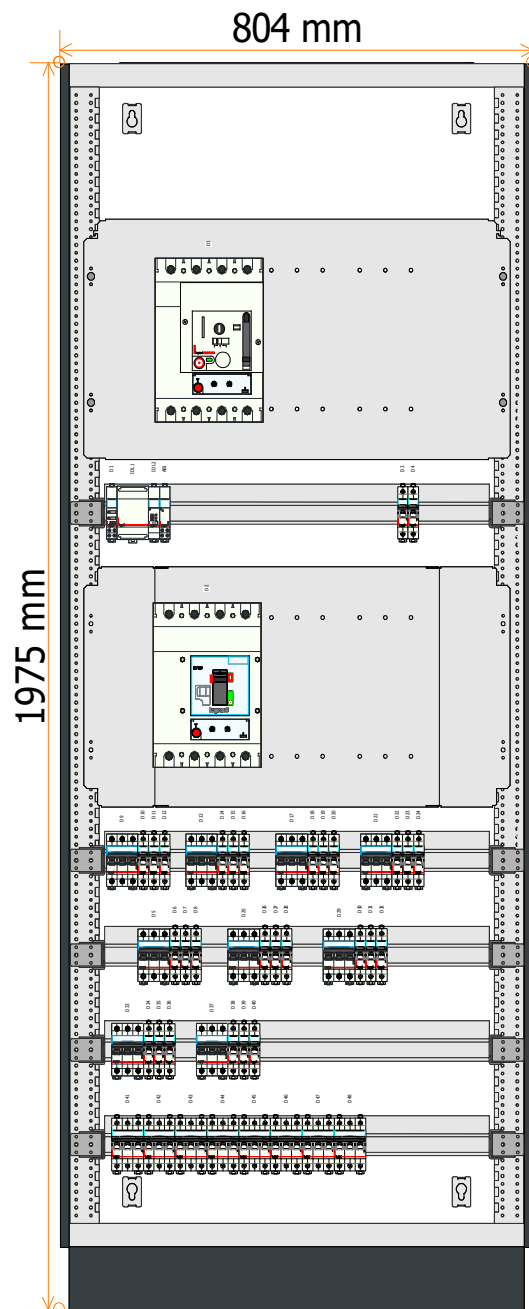


ALTA STORAGES

NORMAL POWER DB BIG

N° of project:		C		F	
N° plan:		B		E	
Date:	6/10/2026	A		D	
Drawn by:	VAKHTANG TURASHVILI			N° folio:	5 / 8





# **ALTA STORAGES** **NORMAL POWER DB BIG**

N° of project:

N° plan:

Date:

6/10/2026

Drawn by:

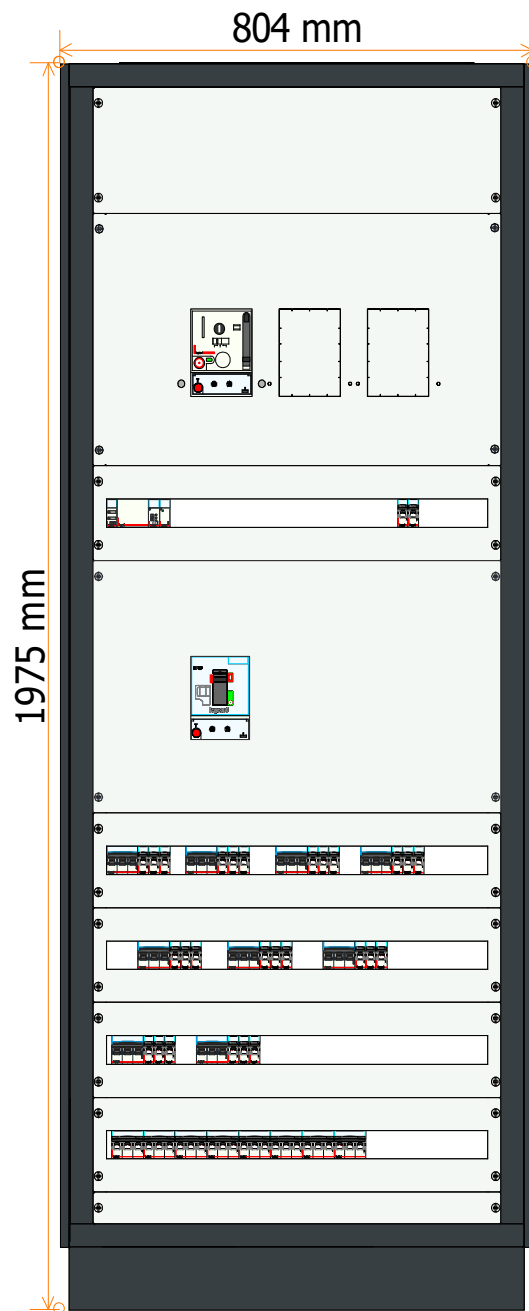
VAKHTANG  
TURASHVILI

C  
B  
A

F  
E  
D

N° folio:

7 / 8



**ALTA STORAGES**  
**NORMAL POWER DB BIG**

N° of project:

N° plan:

Date:

6/10/2026

Drawn by:

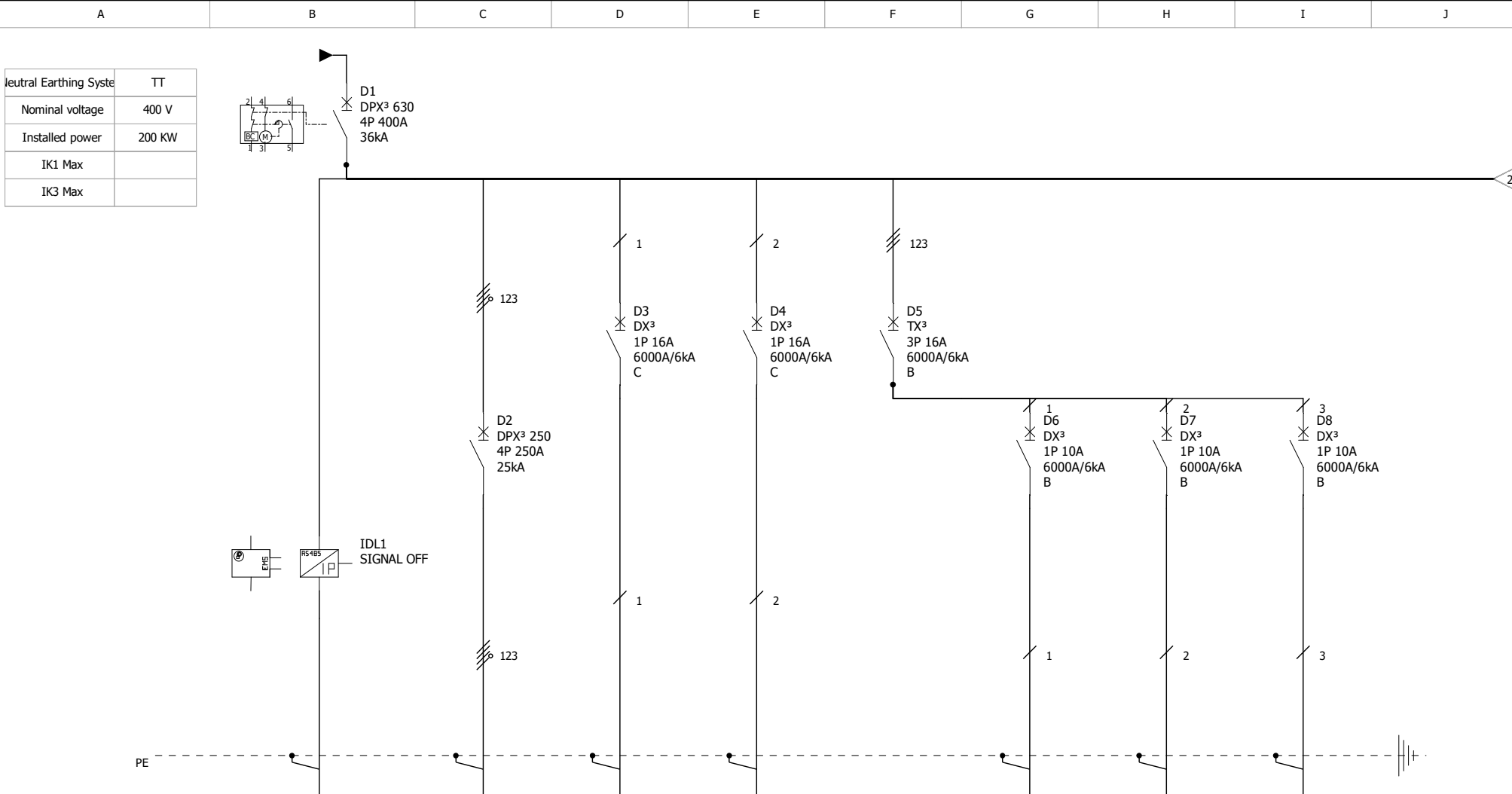
VAKHTANG  
TURASHVILI

C  
B  
A

F  
E  
D

N° folio:

8 / 8



Device Identification	D1	D2	D3	D4	D5	D6	D7	D8
Description	MAIN CB	OFFICE CB	SOCKETS 1	SOCKETS 2	OUT LIGHT			
Power	200 KW	140 KW	2 KW	2 KW	3 KW			
Cable length		107 M	130 M	150 M	340 M			
Cable sections	4*240	4*95	3*2.5	3*2.5	5*2.5			
Cable type	N2XH	N2XH	NHXMH	NHXMH	NHXMH			
Type cable insulation	XLPE	XLPE	XLPE	XLPE	XLPE			
Voltage Drop %		2.3%	4.5%	5.2%	4.7%			

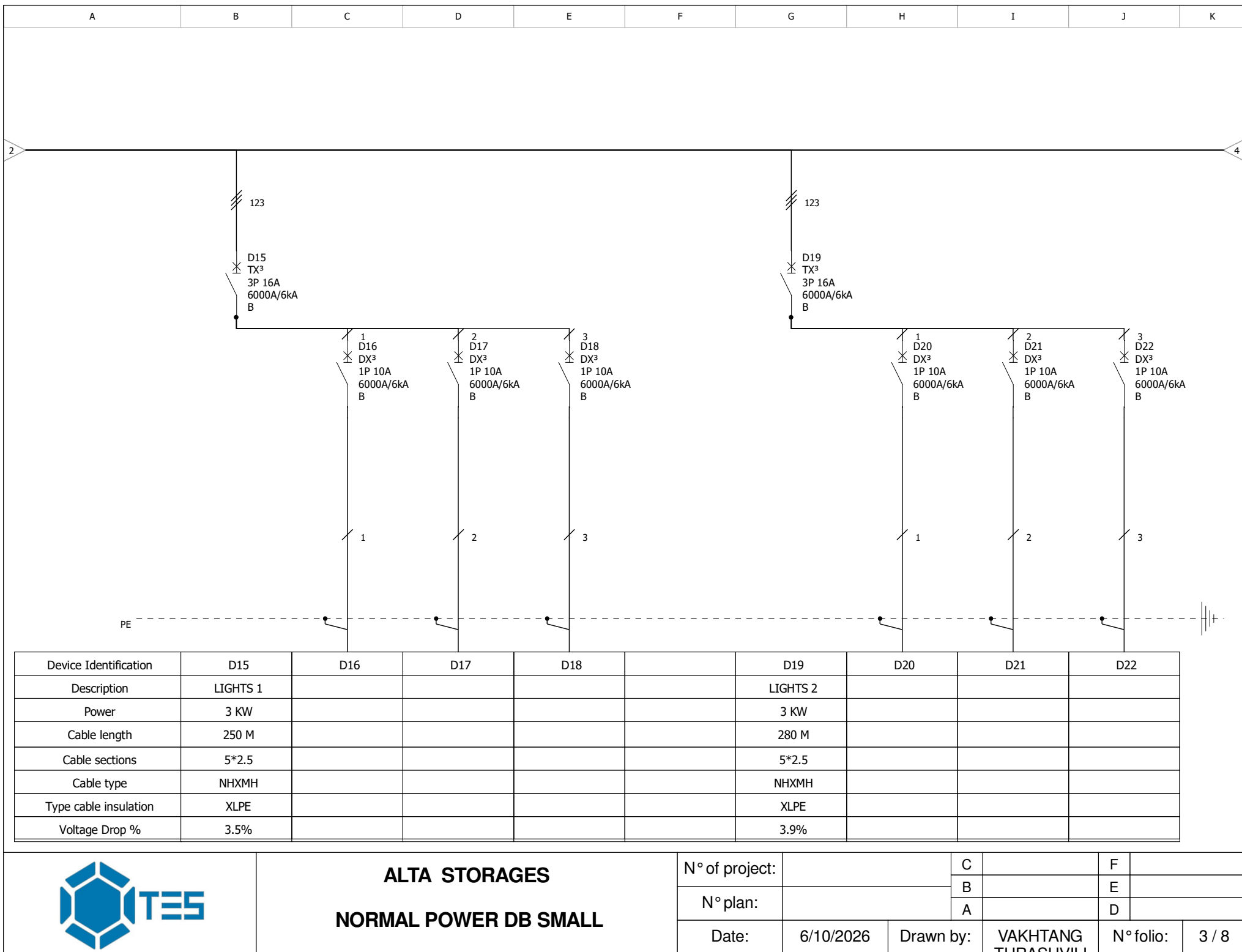


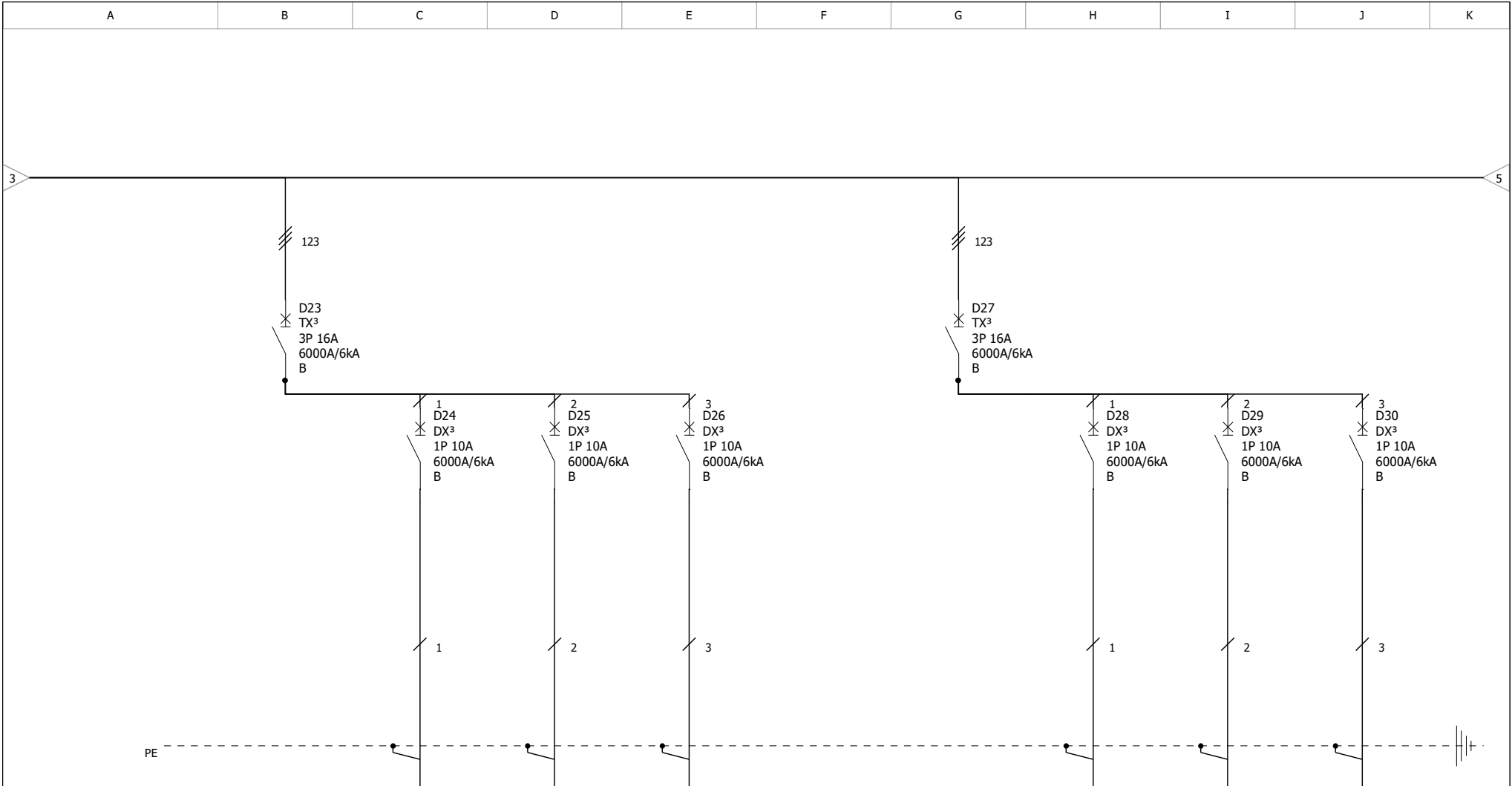
ALTA STORAGES

NORMAL POWER DB SMALL

N° of project:		C		F	
N° plan:		B		E	
Date:	6/10/2026	Drawn by:	VAKHTANG TURASHVILI	N° folio:	1 / 8







Device Identification	D23	D24	D25	D26		D27	D28	D29	D30
Description	LIGHTS 3					LIGHTS 4			
Power	3 KW					3 KW			
Cable length	330 M					320 M			
Cable sections	5*2.5					5*2.5			
Cable type	NHXMH					NHXMH			
Type cable insulation	XLPE					XLPE			
Voltage Drop %	4.6%					4.4%			

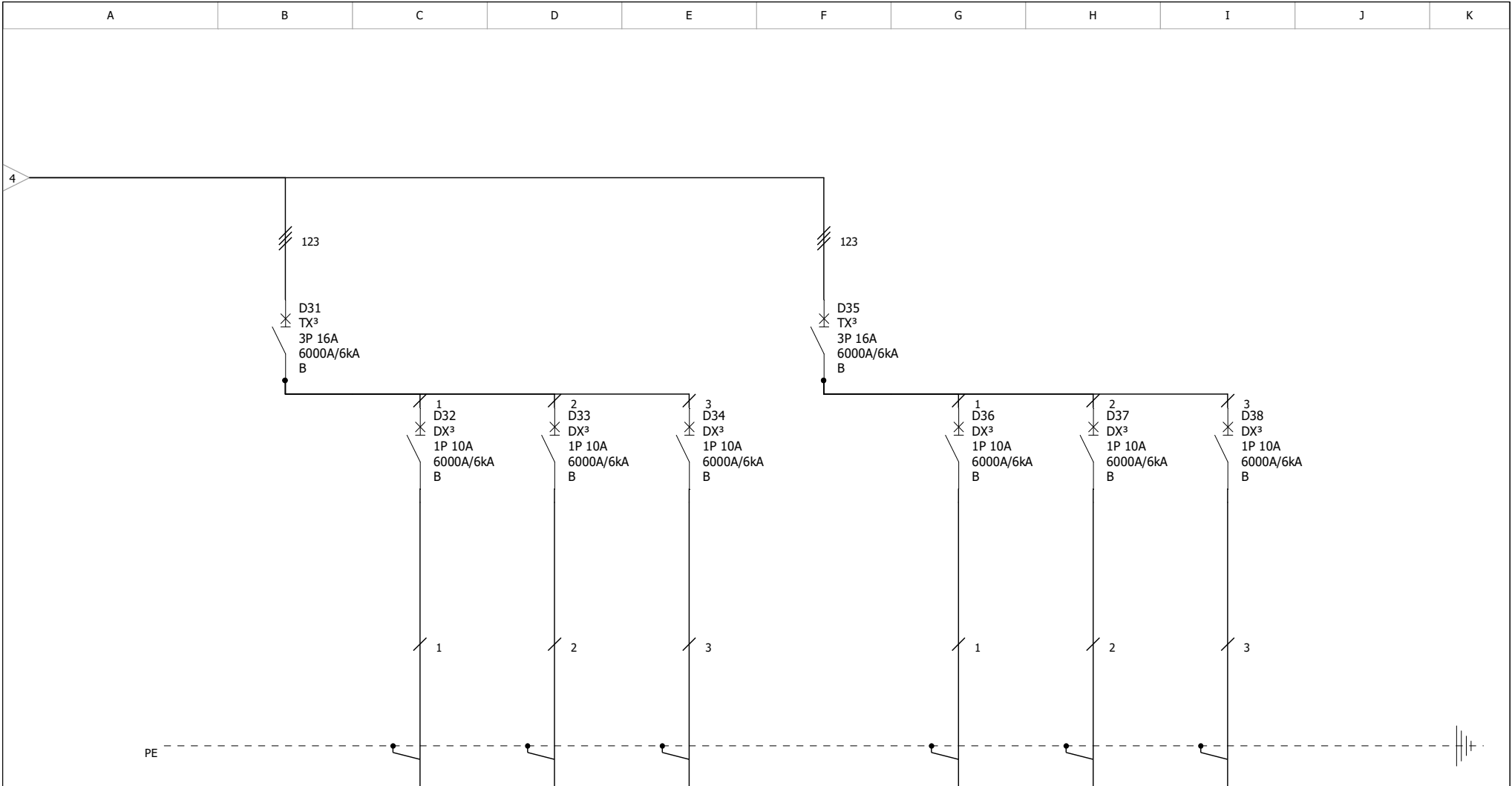


**ALTA STORAGES**

**NORMAL POWER DB SMALL**

N° of project:		C		F	
N° plan:		B		E	
		A		D	
Date:	6/10/2026	Drawn by:	VAKHTANG TURASHVILI	N° folio:	4 / 8





Device Identification	D31	D32	D33	D34	D35	D36	D37	D38	
Description	EM LIGHT 1				EM LIGHT 2				
Power	0.2 KW				0.2 KW				
Cable length	640 M				820 M				
Cable sections	5*2.5				5*2.5				
Cable type	NHXMH				NHXMH				
Type cable insulation	XLPE				XLPE				
Voltage Drop %	3.6%				4.6%				



ALTA STORAGES

NORMAL POWER DB SMALL

N° of project:		C		F	
N° plan:		B		E	
		A		D	
Date:	6/10/2026	Drawn by:	VAKHTANG TURASHVILI	N° folio:	5 / 8

A	B	C	D	E	F	G	H	I	J	K
---	---	---	---	---	---	---	---	---	---	---

PE -----

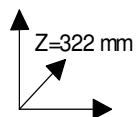
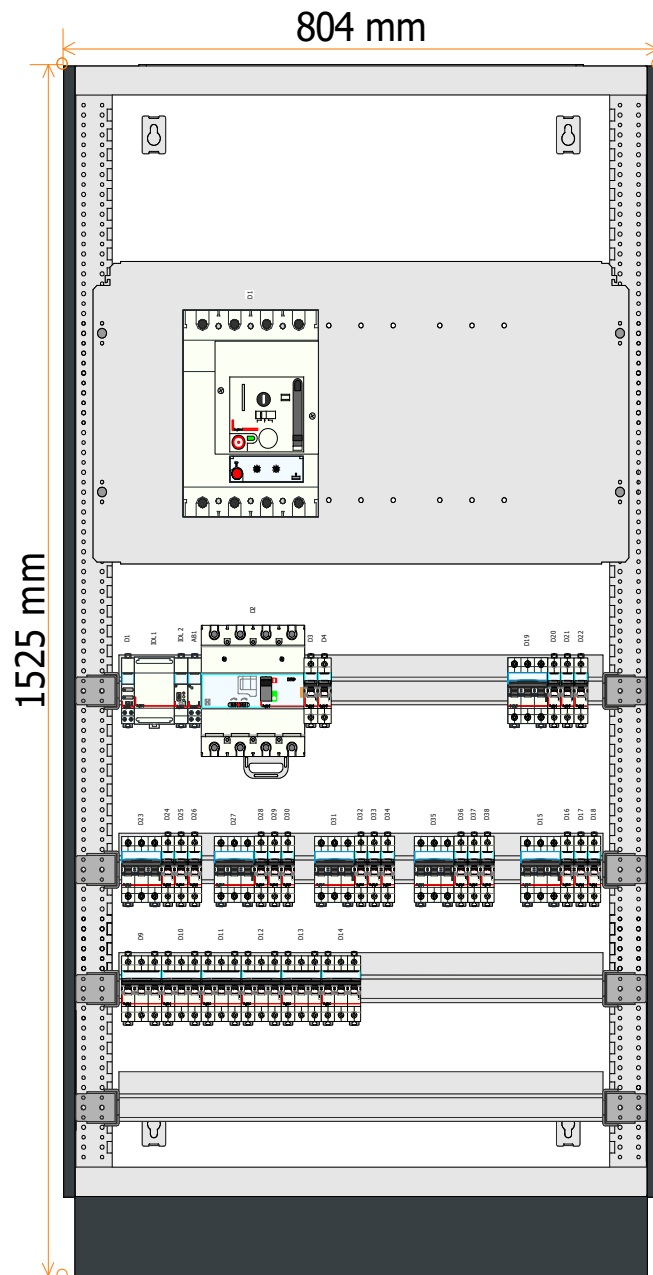
Device Identification									
Description									
Power									
Cable length									
Cable sections									
Cable type									
Type cable insulation									
Voltage Drop %									



ALTA STORAGES

NORMAL POWER DB SMALL

N° of project:		C		F	
N° plan:		B		E	
		A		D	
Date:	6/10/2026	Drawn by:	VAKHTANG TURASHVILI	N° folio:	6 / 8



**ALTA STORAGES**  
**NORMAL POWER DB SMALL**

N° of project:

N° plan:

Date:

6/10/2026

Drawn by:

VAKHTANG  
TURASHVILI

C

B

A

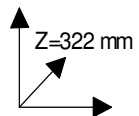
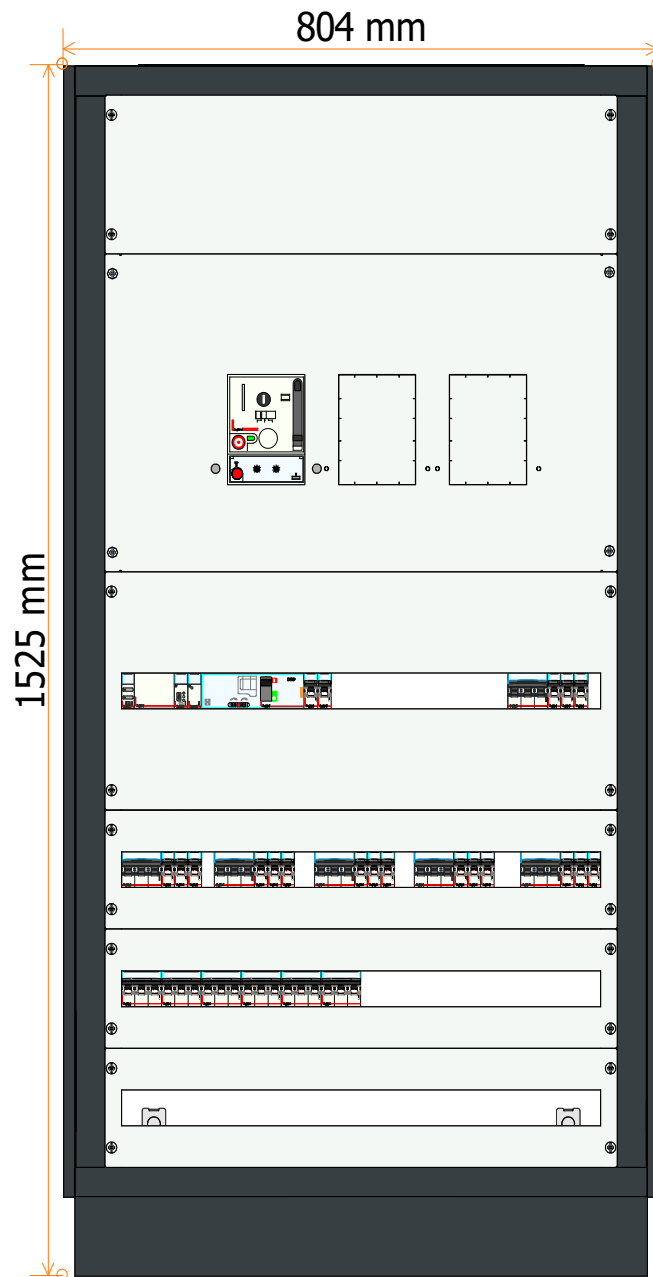
F

E

D

N° folio:

7 / 8



**ALTA STORAGES**  
**NORMAL POWER DB SMALL**

N° of project:

N° plan:

Date:

6/10/2026

Drawn by:

VAKHTANG  
TURASHVILI

C

B

A

F

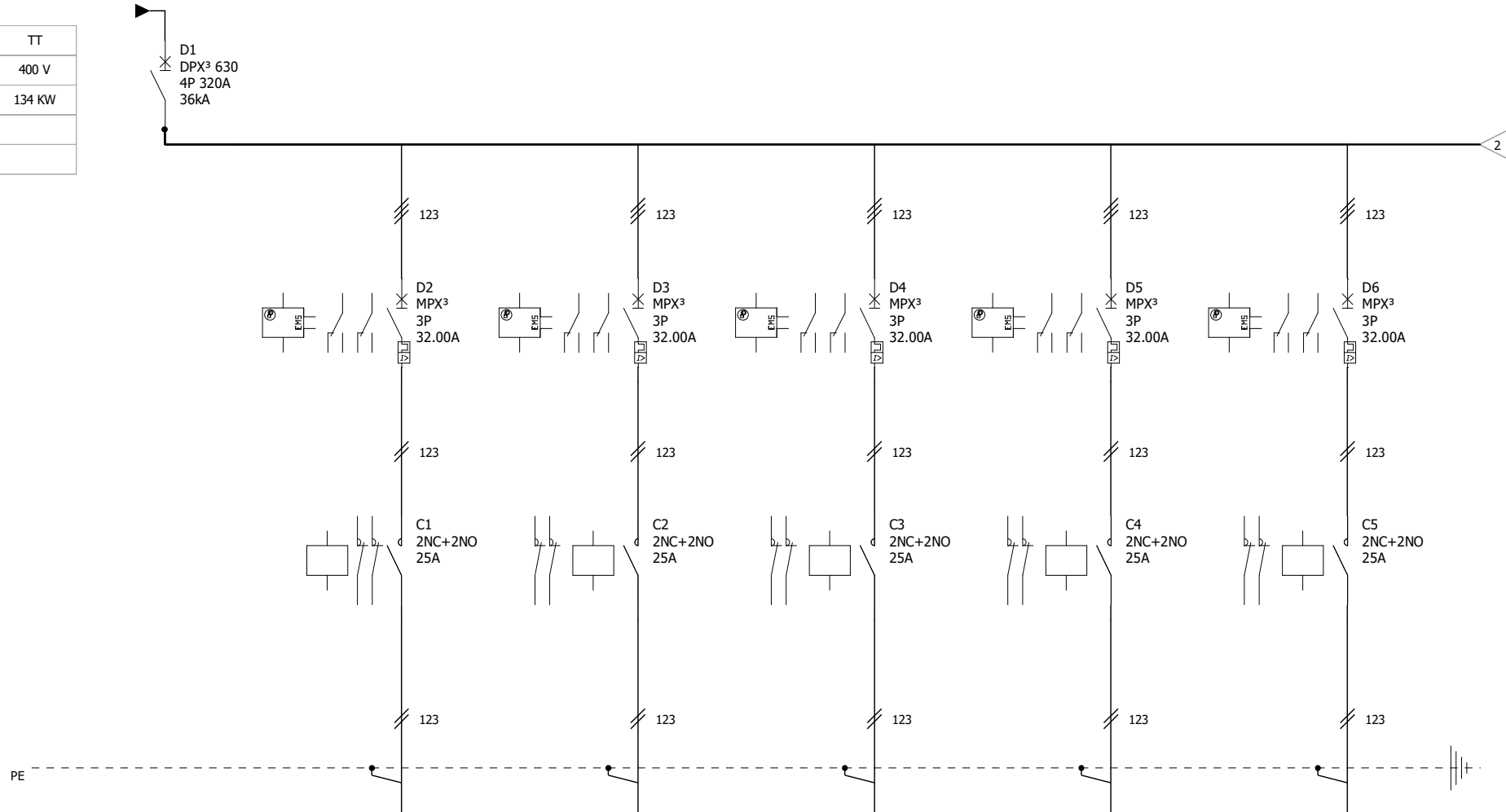
E

D

N° folio:

8 / 8

Neutral Earthing System	TT
Nominal voltage	400 V
Installed power	134 KW
IK1 Max	
IK3 Max	



Device Identification	D1	D2	D3	D4	D5	D6
Description	MAIN CB	SMOKE EXHAUST FAN 1	SMOKE EXHAUST FAN 2	SMOKE EXHAUST FAN 3	SMOKE EXHAUST FAN 4	SMOKE EXHAUST FAN 5
Power	134 KW	15 KW	15 KW	15 KW	15 KW	15 KW
Cable length	5 M	34 M	59 M	74 M	75 M	98 M
Cable sections	4X120	4*4	4*4	4*4	4*4	4*6
Cable type	N2XH FE180/E90	N2XH FE180/E90	N2XH FE180/E90	N2XH FE180/E90	N2XH FE180/E90	N2XH FE180/E90
Type cable insulation	XLPE	XLPE	XLPE	XLPE	XLPE	XLPE
Voltage Drop %		1.6 %	2.8 %	3.6 %	3.6 %	3.1 %



**ALTA STORAGES**  
**FLSDB SMALL**

N° of project:

N° plan:

Date:

6/10/2026

Drawn by:

VAKHTANG  
TUBASHVILI

C

B

A

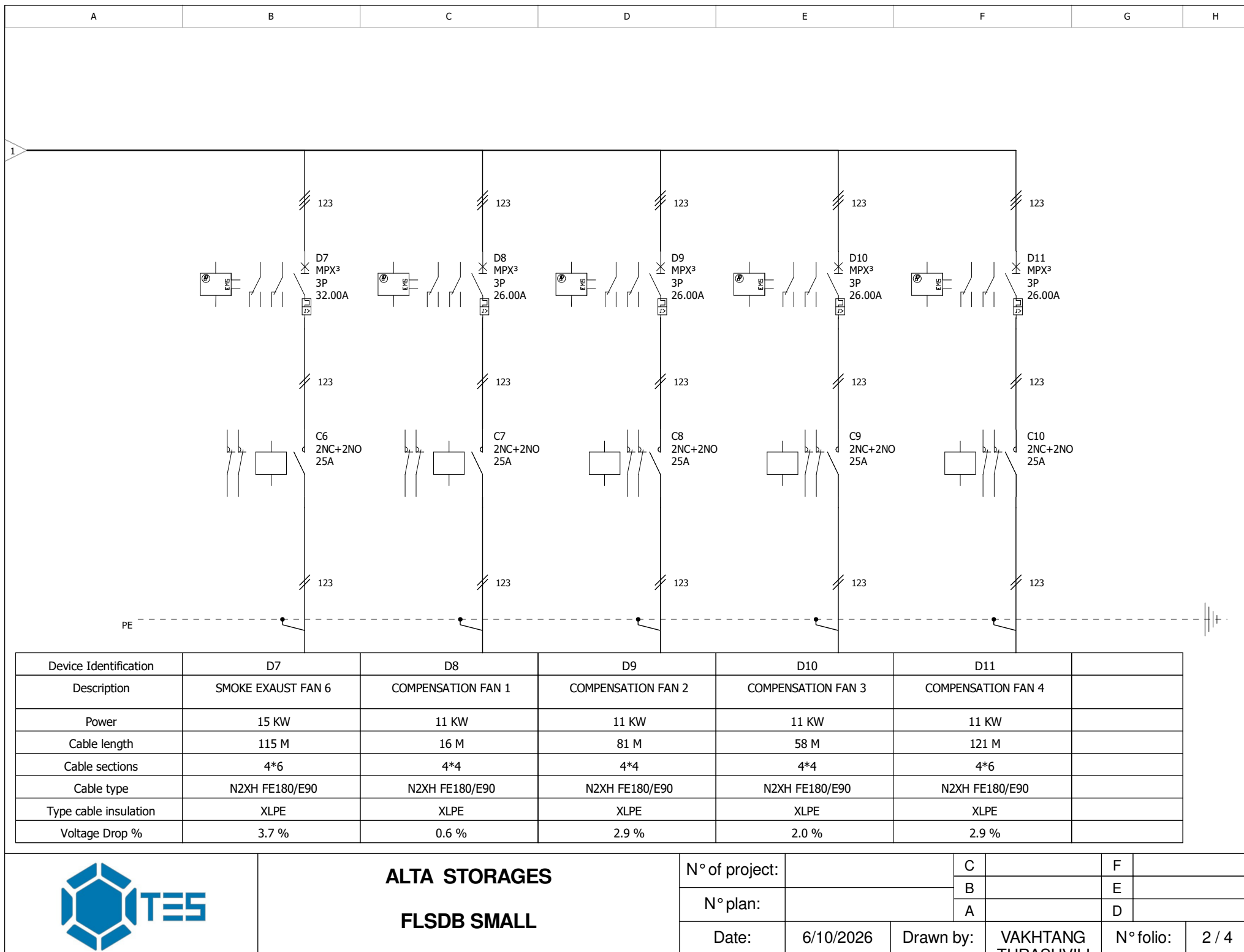
F

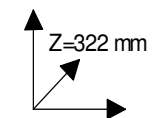
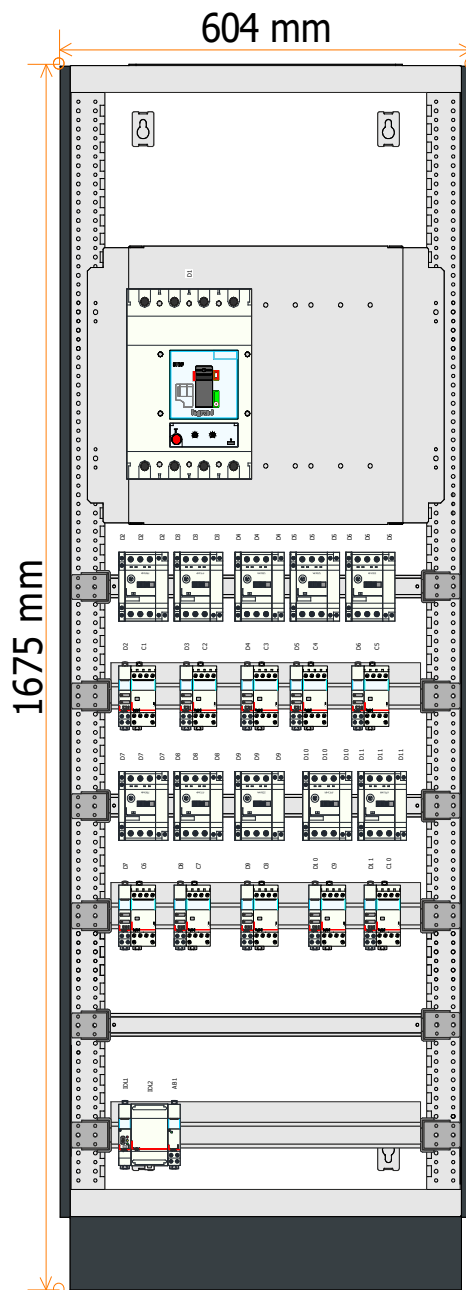
E

D

N° folio:

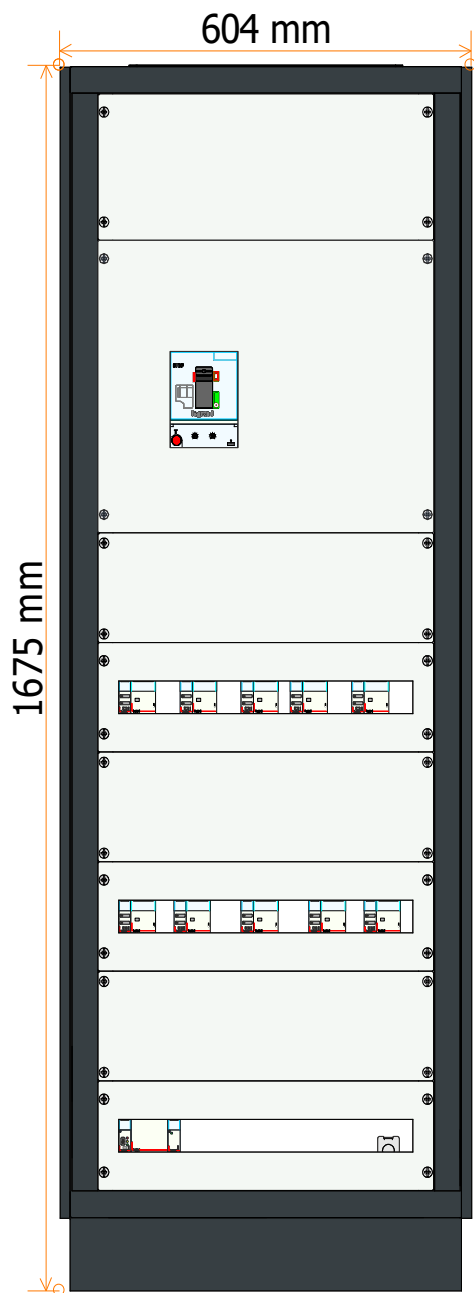
1 / 4





**ALTA STORAGE**  
**FLSDB SMALL**

N° of project:			C		F	
			B		E	
	N° plan:		A		D	
Date:	6/10/2026	Drawn by:	VAKHTANG TURASHVILI		N° folio:	3 / 4

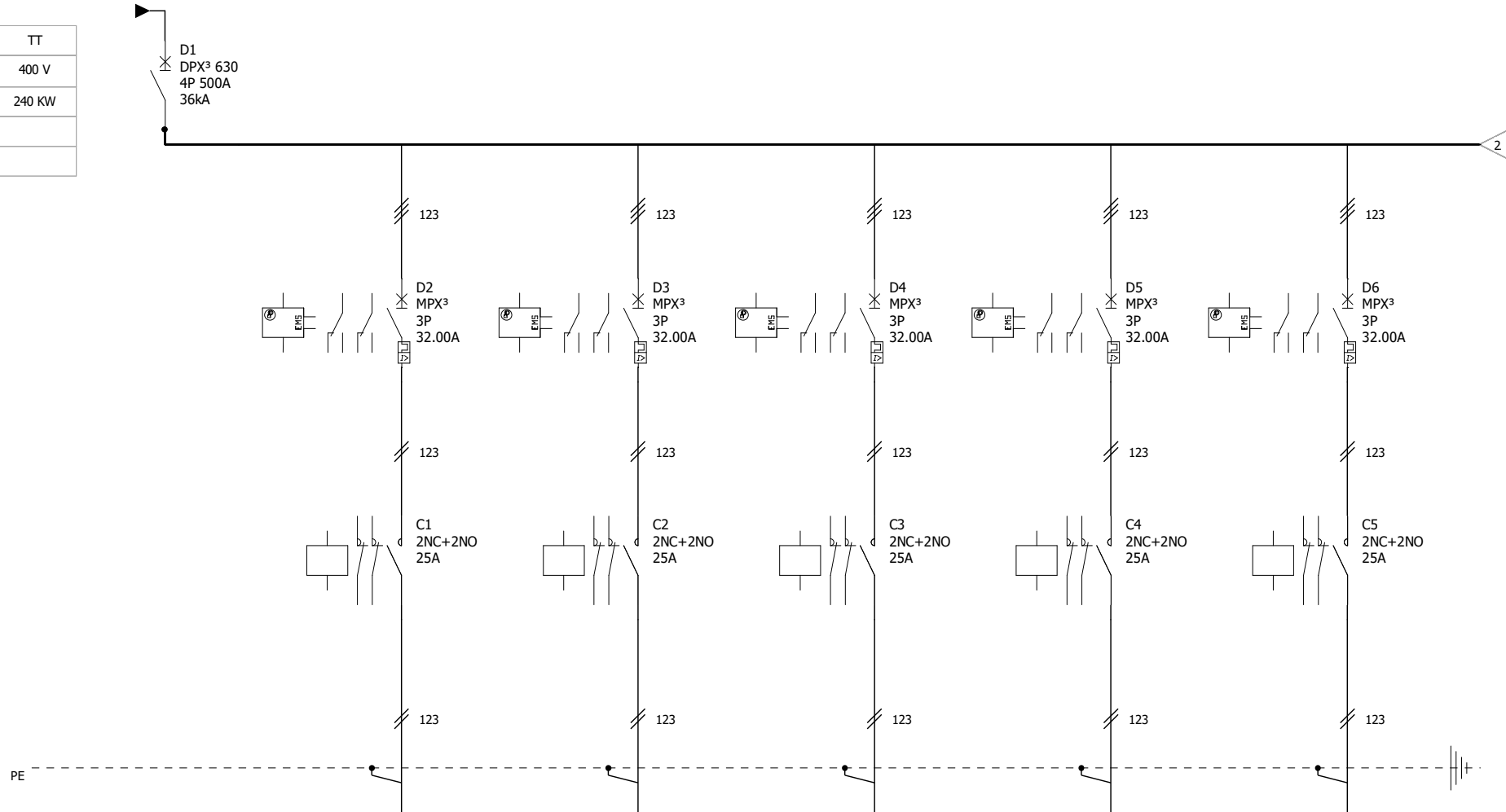


**ALTA STORAGES**  
**FLSDB SMALL**

N° of project:			C		F	
			B		E	
			A		D	
Date:	6/10/2026	Drawn by:	VAKHTANG TURASHVILI		N° folio:	4 / 4



Neutral Earthing System	TT
Nominal voltage	400 V
Installed power	240 KW
IK1 Max	
IK3 Max	

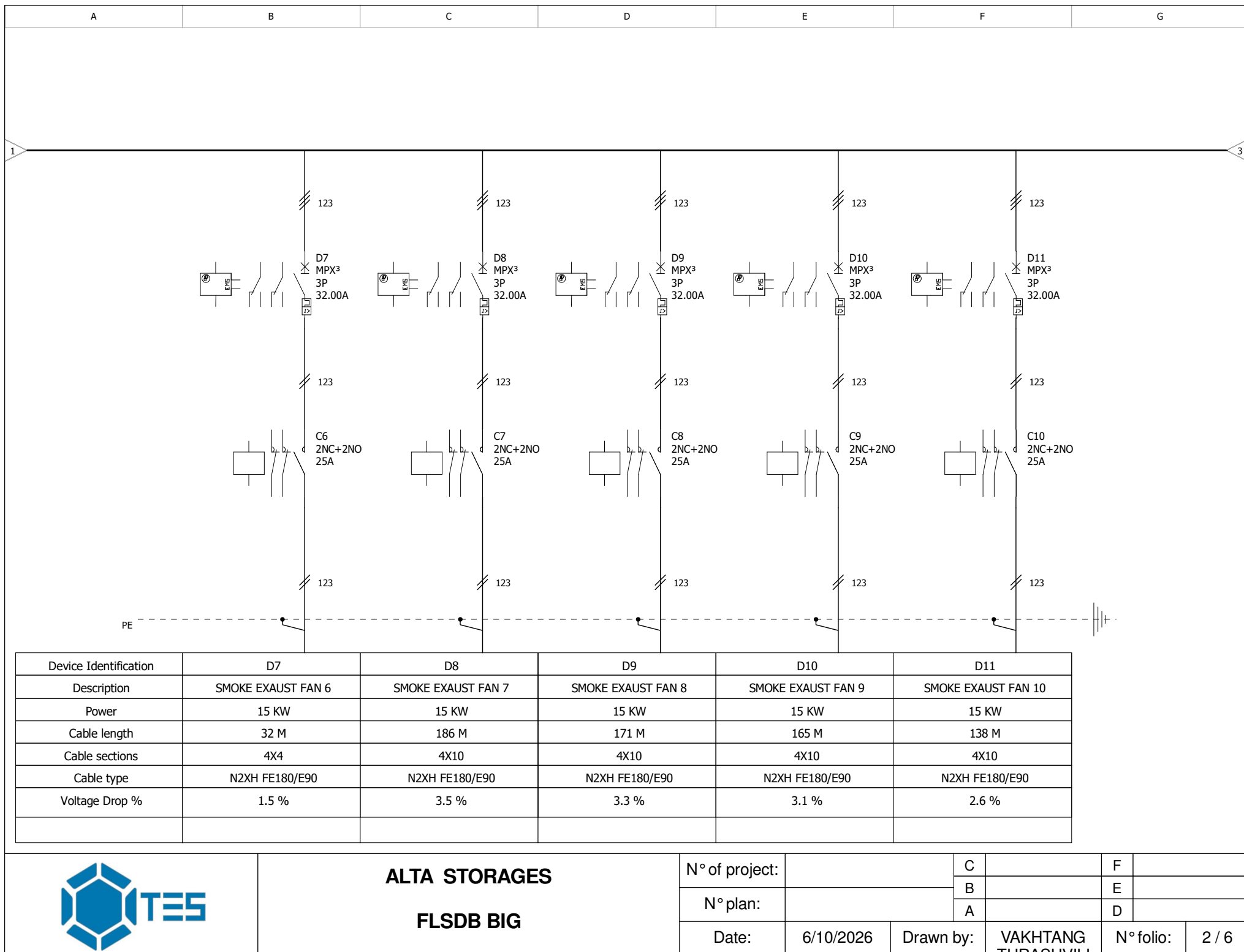


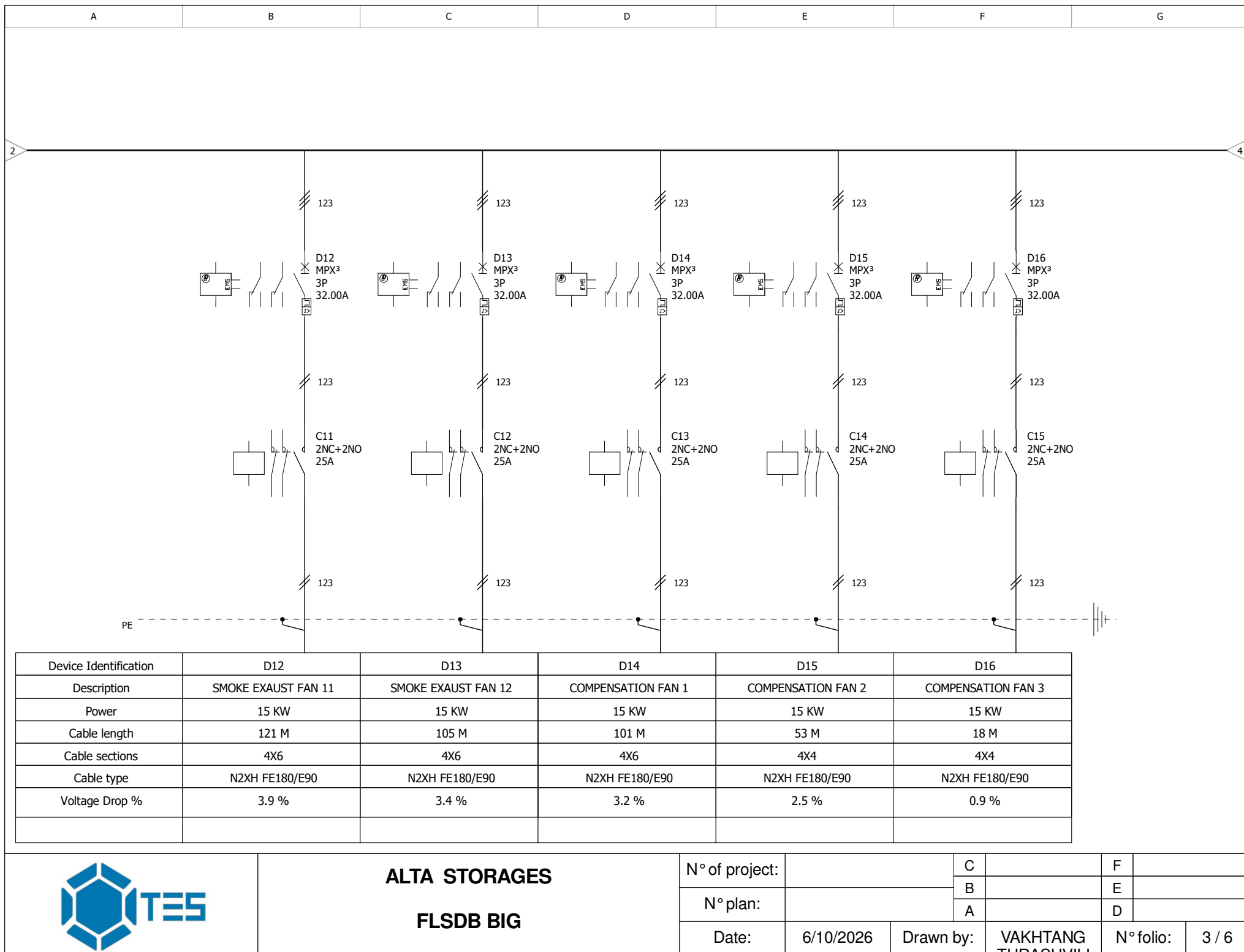
Device Identification	D1	D2	D3	D4	D5	D6
Description	MAIN CB	SMOKE EXHAUST FAN 1	SMOKE EXHAUST FAN 2	SMOKE EXHAUST FAN 3	SMOKE EXHAUST FAN 4	SMOKE EXHAUST FAN 5
Power	240 KW	15 KW	15 KW	15 KW	15 KW	15 KW
Cable length	5 M	115 M	98 M	82 M	66 M	51 M
Cable sections	4X240	4X6	4X6	4X6	4X4	4X4
Cable type	N2XH FE180/E90	N2XH FE180/E90	N2XH FE180/E90	N2XH FE180/E90	N2XH FE180/E90	N2XH FE180/E90
Voltage Drop %		3.7 %	3.1 %	2.6 %	3.2 %	2.4 %

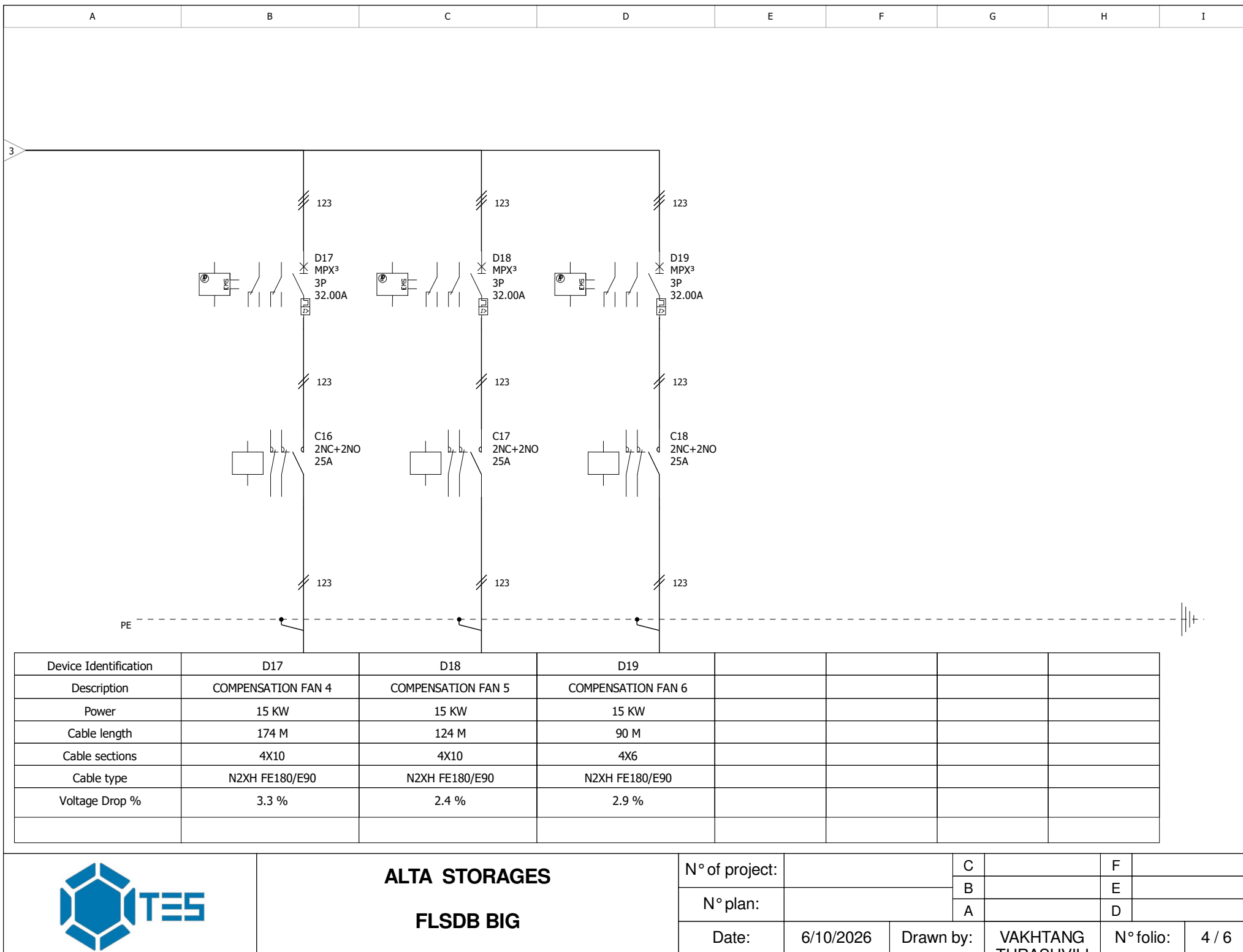


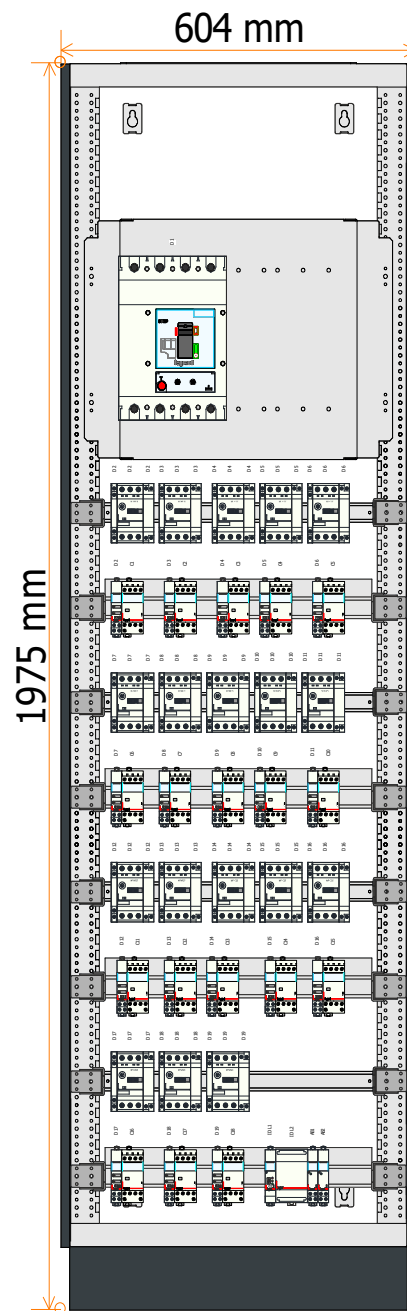
# **ALTA STORAGES** **FLSDB BIG**

N° of project:		C		F	
N° plan:		B		E	
		A		D	
Date:	6/10/2026	Drawn by:	VAKHTANG TURASHVILI	N° folio:	1 / 6









# ALTA STORAGES FLSDB BIG

N° of project:

N° plan:

Date:

6/10/2026

Drawn by:

VAKHTANG  
TURASHVILI

C

B

A

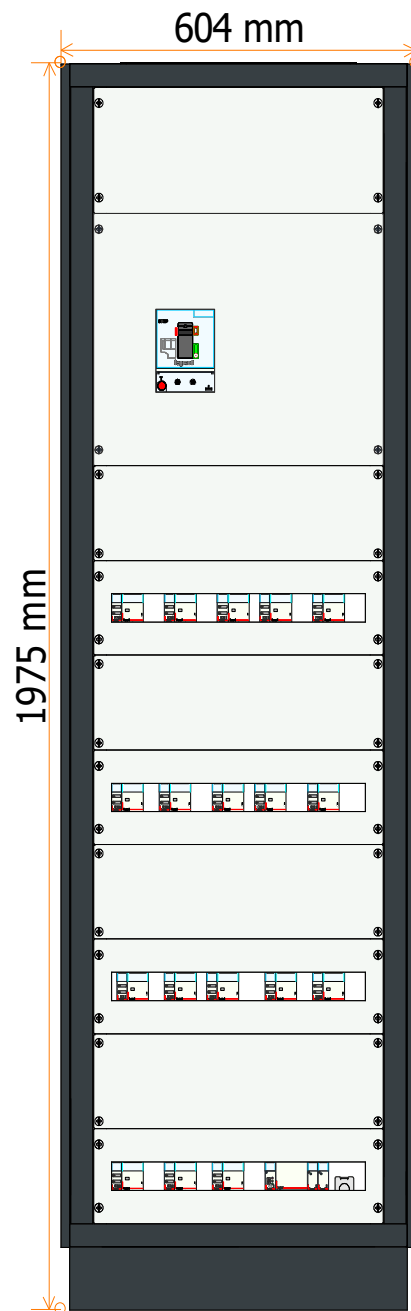
F

E

D

N° folio:

5 / 6



**ALTA STORAGES**  
**FLSDB BIG**

N° of project:			C		F	
			B		E	
			A		D	
Date:	6/10/2026	Drawn by:	VAKHTANG TURASHVILI		N° folio:	6 / 6